



PRODUCT DATA SHEET

REGION
WEST COAST

SERIES
STEPLOCK®

STYLE
STONELOCK™

The rustic look and textures of an uneven natural stone with all the benefits of sand-set interlocking pavers.

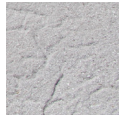
The natural beauty of Stonelock™ pavers add the earthy look of stones and a smooth touch of class to your deck. Available in the Original rustic finish and in Antiqued. To obtain the Antiqued finish, the pavers go through a high-end process that gently crafts the surfaces, adding a touch of timeworn colonial streets to a very contemporary paver.

The Stonelock™ collection is part of our Steplock® Line, exclusively designed for pedestrian applications.

COLOR SELECTION - PAVERS AND COPING



SANDSTONE



GRAYSTONE⁽¹⁾

(1) Graystone color is only available in Antiqued finish.

FINISHES



ORIGINAL



ANTIQUED⁽¹⁾

(1) The Antiquing process lightens up the original paver color. Check actual samples before making a decision.

PAVER AND PAVING SLABS

SIZES & PACKAGING

NOMINAL SIZE (in)	ACTUAL DIMENSIONS (mm)	SQ FT PER PALLET	WEIGHT PER PALLET
8 x 8 x 1-5/8	200 x 200 x 40	160 SQ FT	2,870 LBS
8 x 12 x 1-5/8	200 x 300 x 40	160 SQ FT	2,870 LBS
12 x 12 x 1-5/8	300 x 300 x 40	180 SQ FT	3,255 LBS
16 x 16 x 1-5/8	400 x 400 x 40	160 SQ FT	2,870 LBS
24 x 24 x 1-5/8	600 x 600 x 40	120 SQ FT	2,160 LBS

NOTES

- The Stonelock™ collection is designed to have a natural look. Please expect variations in color and some chipping and non-perfect edges. These details are intended to enhance the appearance of the pavers.
- Pavers should be installed from several pallets at a time to maintain the best color consistency.

APPLICATIONS



Designed for use in pedestrian applications including patios, swimming pool decks, walkways, stepping stones as well as architectural and decorative uses such as raised walls, fountains, benches and planters.

CUSTOM COLORS

Custom colors available typically for minimum quantities of 10,000 square feet.

COPING & SPECIALTY PIECES

NOMINAL SIZES (in), THICKNESS: 1-5/8"

One Sided	4x8, 4x12, 4x16, 24x12, 12x12, 16x16, 24x24
Two Sided	4x12, 4x16, 24x12, 12x12, 16x16, 24x24
Three Sided	4x16, 12x12, 16x16, 24x24
Four Sided	12x12, 16x16, 24x24
Adjacent	12x12, 16x16, 24x24
Remodeling*	4x12 with 3" drop-face, 4" drop-face, 5" drop-face.
Precut one sided	4x8, 4x12
Precut two sided	4x12, 4x16

(* Remodeling coping is not available in Graystone Antique.

- Due to processes required to manufacture, package, deliver, unpack, install and compact the products, small chipping can be expected.
- The product images in our catalogs, brochures, or shown on monitor screens give a general indication of color for a preliminary selection. We recommend you also view current product samples and look at actual finished projects before making your final decision.

EAST COAST PLANT

MAIN OFFICE

120 NE 179th St.
North Miami Beach, FL 33162
(305) 653-7283



Artistic Paver Mfg.®

Specializing in unusual sand-set pavers for a distinguished look.

sales@artisticpavers.com

(877) 707-2831

www.artisticpavers.com

WEST COAST PLANT

1508 N V.I.P. Blvd.
Casa Grande, AZ 85222
(520) 426-3479